



TABMAtalk

this issue

- Charity Golf Day Report P.1
- Member Re-Sign P.2
- New Member P.2
- First Aid Training - Course & Alliance P.3
- Computer Training Alliance P.3
- New Product Launch - SmartLVL 14 P.4
- Sustainability & Going Green - Sales Tools P.5
- Call for Public Comment P.5
- WH&S Legislation Change - Crane Licence P.6
- Recruitment Kicks Off P.6
- Travel Info P.7
- Leave Notification P.7

QUOTE OF THE MONTH

A diplomat is a man who always remembers a woman's birthday, but never remembers her age.

~ Robert Frost ~



Representatives from Thora Wholesale Timbers, Simmonds Lumber, Hoo-Hoo Club 218 & TABMA Queensland

Charity Golf Day - A Fabulous Friday

Friday 31st July, a brilliantly blue morning saw 64 entrants meet for a friendly game of Ambrose Golf; with the altruistic goal of raising money for the Royal Queensland Bush Children's Health Scheme. After a delicious BBQ breakfast graciously supplied by Bryan Byrt Ford Upper Mount Gravatt, the golf buggies zoomed off to their designated spots for the first tee-off of the day. One round down and I must apologise to the teams who started on holes numbered 9 through to 1 for their VERY slow day following the pink team about the course. Why does the ball never go where you tell it to? How did we manage to buy the box of balls complete with internal beacons for the bunkers, water and bushland? No secret talents discovered by our team in our first game of golf, but we had a great day and by all reports so did the other participants. We are looking forward to a few practice hits at the driving range before next years' event.

A report from Hoo-Hoo Club 218 event organiser, Mr Alan Jones:

The course was in great condition and while some would say that it contributed to their excellent score, others simply had an enjoyable day and preferred to forget their score. The game was followed by a Club lunch during which Comedian, Mad Mike Bennett provided the entertainment.

For the first time, TABMA entered a ladies team, very capably lead by Captain, Karen Johnston. From all reports, the ladies had a fantastic time, fully decked out in their TABMA Pink Polos. The organisers are hoping additional ladies teams will get behind the TABMA Team next year.

The beneficiary of the day was the Royal Queensland Bush Children's Health Scheme. CEO, Cheryl Miller, gave everyone an insight into the work of the Scheme, and Brisbane Hoo-Hoo Club 218 President, Pieter Verlinden, presented Cheryl Miller with a cheque for \$5,000. Gainsborough Greens has been booked once again for 2010. The 28th May has been set aside and the organisers are hoping for an increased attendance next year. Go to page 2 for the day's results.



Kelly Everett (TABMA Qld) & Peter Solomon, (Sponsor Bryan Byrt Ford Upper Mt Gravatt)



LEFT:

Alec Parker & Bob McMaster (Redland Bay Roof Trusses), Cameron Jones & Richard Knowles (Carter Holt Harvey Woodproducts Australia), & Karen Johnston (TABMA Qld)



BELOW: Alicia Oelkers (TABMA Qld), Stephen Koschade (Queensland Forest Products), Shane Seaborne (Wholesale Stair & Timber), Andrew Christie (Asian Pacific) & Karen Johnston (TABMA Qld)



ABOVE: The unfortunate yet super cool & understanding Pinewood Products team followed us girls through the course. On the plus side we gave them lots of time for drinks & laughs. Jason Leeds, Mike Lipscombe, Alicia Oelkers, Sean Padget, Mark Sealey & Katie Armstrong.

Timber & Building Materials Association (Qld) Ltd

500 Brunswick Street, PO BOX 532

FORTITUDE VALLEY QLD 4006

P (07) 3254 3166 F (07) 3254 4599

E info-qld@tabma.com.au W www.tabma.com.au

Karen Johnston

Alicia Oelkers

Kelly Everett

Katie Armstrong

CEO TABMA Queensland
Group Training & Recruitment Manager

Group Training Consultant

Office Administrator

Membership Anniversaries

For the month of
AUGUST, the follow-
ing TABMA QLD
members are celebrat-
ing their membership
anniversaries.

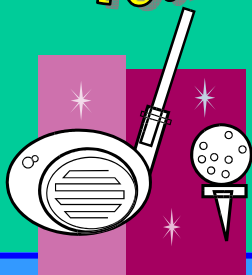
Thank you for your
fantastic support of the
Association!

Cahill Timber

~ 4 Years ~

Tarmac QLD

~ 1 Year ~



GOLF DAY RESULTS:

- 1st: C McAree, P Doherty,
R Steer, V Vanderki
2nd: R Knowles, C Hall,
J Tulloch on a CB
3rd: G Leddy, R Ryley,
D Smith, J Conti.

Nearest The Pins:
6th Russell Ryley
12th Rob Steer

Straight Drive 7th:
J Leeds

Approach Shot 14th:
Alec Parker

OCEANIA RE-JOINS TABMA QUEENSLAND

Only a few months after the previous manager resigned from TABMA Queensland, Oceania have rejoined our ranks with new Queensland and NT manager, Greg Lock realising the benefits we offer not only their organisation, but also industry as a whole.

For over twenty years, Oceania Forest Products has been servicing the timber industry throughout Australia. Operation centres are located in Brisbane, Sydney, Melbourne, Perth and Adelaide as well as distribution outlets in North Queensland and Darwin. Timber is sourced from quality conscious mills located all over the world including Europe, Scandinavia, New Zealand, South East Asia as well as timber from local mills here in Australia. Today, Oceania is one of Australia's leading importers of processed timber products from Indonesia, Malaysia and the Philippines.

With a focus on innovation and product development, Oceania prides itself as a customer focused company that carries a wide variety of timber products that can be trusted to be of the highest quality. An established, streamlined logistical system ensures fast, efficient delivery to all areas of Australia.

Oceania's product range includes;

- MDF Underlay
- Baby Beams
- Cypress Blue
- Cypress Gold
- FinPrimed
- Hardwood Decking
- Homestyle Treated Pine
- InnoWood; Decking & Cladding
- MDF Mouldings
- Meranti & Mahogany
- Merbau Stair Componentry
- Privacy Screening
- Prime1 Mouldings
- Prime1 Window Reveal
- Prolam Merbau Beams
- Radiata Pine Boards & Beams
- Ultra V Timber Guard
- Weathertext



NEW MEMBER: TIMPORT SPECIALISED TIMBER PRODUCTS



Timport Specialised Timber Products aims to meet the timber needs of a range of customers for both small and large projects. We supply quality, select grade timber on time and at a competitive price.

Our Brisbane based moulding factory provides a range of dressed hardwood timber products for job lots and large projects throughout Australia. It has become a one-stop-shop for an extensive range of Merbau/Kwila mouldings. Dressed and sawn timber is available on site for internal and external applications including:

EXTERNAL

- Large Feature Posts
- Verandah Posts
- Handrail
- Exposed Beams
- Stairs
- Screening
- Window Sill

INTERNAL

- Flooring
- Stairs
- Handrail
- Architraves & Skirting
- Door Jambs,
- Panelling
- Outdoor Furniture

A range of both Clear and Finger-Jointed Pine mouldings in classic and contemporary profiles for

skirting, architraves, chair and picture rails are also available.

As well as Merbau/Kwila and Pine, Timport Specialised Timber Products processes and supplies a range of other timber species including:

- Western Red Cedar
- Taun
- Australian Hardwoods
- Rosewood

CONTACT DETAILS

Name: Wayne Greaves
Phone: (07) 3274 4018
Fax: (07) 3274 4551
Address: 18 Success Street
Acacia Ridge Q 4110
PO BOX: Po Box 2299
Graceville East Q 4075

NEW ALLIANCE - FIRST AID TRAINING

Workplace safety including qualified First Aid staff is especially important in our industry where machinery is often used and potential hazards have a higher risk of occurring than in other industries. To assist in the delivery of this training we have established a service alliance deal with Australian Lifesaving Academy Queensland (ALAQ). There are a number of benefits for TABMA Queensland members established by this alliance:

- ALAQ have streamlined their training process so a full Senior First Aid course is one day rather than two, with theory books completed prior to the practical day of training. CPR training is a few hours rather than an entire day.
- The surf life savers perform a valuable service for the general public and are a quality and reputable association that TABMA Queensland is overjoyed to support.
- ALAQ keep all participants informed as to when their refresher training is due for renewal to ensure your staff have qualifications that are always up to date.
- TABMA Queensland will be working with the ALAQ to host First Aid Training courses a number of times during the year. The benefit of sending your staff to a course arranged through us rather than a public course, is that the trainer can use industry specific examples for potential/probable accidents in your workplace. It is also a day of potential networking with other members of industry.
- **A 10% discount for TABMA Queensland members** who book any training course.

To kick off this alliance, TABMA Queensland has arranged a Senior First Aid training course for Wednesday 23rd September 2009. I will personally be attending this course as will Bruce from ForestWorks to ensure that our colleagues here in Timber House are in safe hands should something happen! If you have need for First Aid officers or need to refresh the training of those already qualified, please complete the attached flyer and return it to TABMA Queensland to secure places for your staff.

If this date is not suitable, please email me the dates when your staff are due for their refresher training, and what type of training is required so I can set up a series of training courses over the coming year.



DO YOU KNOW THE LATEST RESUSCITATION TECHNIQUES?
Check out the Resuscitation Chart in this newsletter to confirm!

NEW ALLIANCE - COMPUTER TRAINING

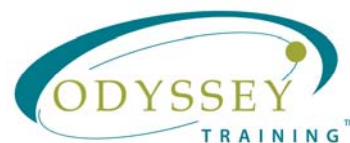
An investment in training is an investment in the future of your staff and company. To assist TABMA Queensland members in developing their skills and improving workplace operations we have established an alliance with Odyssey Training. Through this partnership, TABMA Queensland members receive 5% off scheduled courses delivered throughout Queensland.

With offices in Brisbane, Cairns, Townsville (Melbourne and Sydney), Odyssey Training have developed and improved the lives of over 85,000 Australians since their inception in 1996. They are currently developing their online training services, which will allow participants direct access to computer training in regional areas through Queensland (available early 2010). It will also allow flexibility in delivery should you be unable to send staff on training for consecutive days.

'I have personally completed their Adobe Photoshop Introduction and Advanced courses and found them to be exceptionally talented and helpful trainers.' (Karen Johnston, CEO TABMA Queensland)

Odyssey Training services include:

Computer Training
Adobe Design & Web
Microsoft Office
Microsoft Office Upgrades



Professional Development Training
Business
Communication
Leadership & Management
Training & Assessment

Consultancy & Project Services
Technical Writing
Training Project Management

MENTION YOU ARE A TABMA QUEENSLAND MEMBER TO RECEIVE DISCOUNTED RATES!

Visit www.odysseytraining.com.au for more information or call **1300 793 951** to register for a course. Attached to this newsletter is their latest training schedule containing course names and upcoming dates.

PRODUCT LAUNCH EVENT - SMARTLVL 14

On Thursday 30th July 2009 I attended a product launch by TABMA Queensland member, Tilling. This was one in a series of events organised across the country for Tilling, the second held in Brisbane, to introduce their SmartLVL 14 to the market. Fellow attendees included merchants and frame and truss manufacturer customers of Tilling (a number of friendly TABMA Queensland members in the group), as well as Tilling crew from across Australia who were on hand to answer any technical and not-so-technical question presented. The key benefits with respect to product characteristics that I gleaned from the presentation include:

- SmartLVL 14 incorporates equivalent span and strength properties to F17 (AS1720.1 Table 2.4).
- Ability to reduce size to 35mm to match seasoned timber sizes due to its increased strength properties. This allows use in truss design.
- The product comes Treated H2S at no additional cost.
- A large size range is available.



Below is some more specific information about SmartLVL 14. Please contact Tilling on the numbers below or visit their website, www.tilling.com.au if you require more information about this new product.

BACKGROUND INFO:

The origin of Laminated Veneer Lumber (LVL) stems from the manufacturing process of aeroplane propellers, along with other high strength aircraft components, made from Spruce veneers during the Second World War. The term 'Veneer' is synonymous with Plywood and gained prominence in the 1970's. The last 20 years have played witness to the emergence of LVL as the pre-eminent timber building material in modern construction practices.

Initial Australian LVL manufacturer started with Modulus of Elasticity (MOE) of 13,200 MPa, approximating an existing US grade of 1.9E. This "recipe" became the de-facto "commodity" LVL grade. New LVL entrants matched this grade. In 1997 SmartFrame LVL began to be marketed as LVL 13 similar to MGP and Glulam (eg. MGP10, GL13). Further, SmartFrame LVL 18 was added shortly after. 'Boutique' LVL products have emerged with lower MOE's (9,700 to 11,000 MPa) which use lower grade Radiata veneers. Consistent characteristic strength values from SmartFrame LVL over many years have allowed an promotion from a grade of 13 to 14. This new grade can be made on an economic and environmentally sustainable basis indefinitely. The increase in characteristic strengths allowed the 36mm LVL to be reduced to 35mm to match seasoned timber.

INTRODUCING SmartLVL 14

SmartFrame are proud to announce the arrival of SmartLVL 14 to its family of Engineered Wood Products. SmartLVL 14 now achieves equal to or better properties to that of F17 under table 2.4 of AS1720.1. Therefore, SmartLVL 14 now has span properties equal to that of F17 with the added benefit of being a more consistent, uniform and available in longer lengths than its hardwood alternative.

SmartLVL 14 boasts to be clean and green, achieving an E₀ rating under AS/NZS 4357.2:2005, plus being harvested from PEFC endorsed sustainable forestry sources. So what does this mean for specifiers?

Architects, Engineers, Builders and Estimators are able to specify SmartLVL 14 where traditional F17 timber may have been placed, making it convenient to specify one product for the project instead of two. The consistency, strength and green credentials of the product, not to mention the lack of waste during SmartLVL 14 production, all combine to provide a cleaner, greener, stronger and longer product - saving time and money in design, supply and labour costs on your project.



PHONE:

(07) 3440 5400

FAX:

(07) 3440 5466



SUSTAINABILITY & GOING GREEN

Sustainability. It's a hot topic floating about in the media (and thereby the general public) that all levels of Government are jumping on the band wagon of with respect to their policies for planning, housing, commercial construction, infrastructure, procurement and anything else in between. It also has a nice strategic fit with other environmental concepts they are promoting at the moment like emissions trading, as well as the Green Building Council of Australia's promotion of green building practices. Happy days for us in the wood business with the wonderful, inherent, environmentally friendly aspects of timber.

The big question is though: **how do we as an industry capitalise on this to make sure that more timber is purchased and used over competing, not as environmentally friendly products?** We need to educate and help the general public, architects and specifiers. Something you can do directly is to provide information for your customers to give to **their** customers; so Mr & Mrs End User can choose the right building materials for their project, which hopefully you can supply.

Some 'unbiased' and free-to-download tools that might help have been produced by different levels of Government and are listed below. If you can link the concepts in these documents, with the use of timber in their building or renovation project and add a splash of your fabulous salesmanship, it will be a 'no brainer' and an extra service you can provide to help your customers.

Potential sales tools for you to promote timber usage:

1. Material Use Technical Sheet - Lightweight Timber.
<http://www.yourhome.gov.au/technical/pubs/fs59.pdf>

Potential sales tools for your customer/builder to guide choice with respect to sustainable housing:

2. Sustainable Home Checklist for Homes:
http://www.brisbane.qld.gov.au/bccwr/environment/documents/bcc7737_sustainable_house.pdf
3. Sustainable Home Checklist for Units/Apartments:
http://www.brisbane.qld.gov.au/bccwr/environment/documents/bcc7737_sustainableunit.pdf
4. Home Buyers Guide:
<http://www.yourhome.gov.au/buyersguide/pubs/buyersguide.pdf>
5. Renovators Guide:
<http://www.yourhome.gov.au/renovatorsguide/pubs/renovatorsguide.pdf>



PUBLIC COMMENTS CALLED FOR

"An industry trade association participates in public relations activities such as advertising, education, lobbying and publishing, but its main focus is collaboration between companies, or standardisation. Associations may offer other services, such as producing conferences, networking or charitable events or offering classes or educational materials. Many associations are non-profit organisations governed by bylaws and directed by officers who are also members. One of the primary purposes of trade groups is to attempt to influence public policy in a direction favorable to the group's members." Wikipedia

To successfully do these things we need to be in constant consultation with members of industry. It is our job to find out information and to share it. Essential to generating REAL CHANGE though, is your contribution. In reality, you are all extremely busy people with business concerns as well as industry concerns. These are interlinked and there are a number of ways you can pass on your knowledge, opinions and advice. Do it directly or use us to do it for you. We can make comment 'on behalf of a group of industry representatives', but we need to know WHAT to say on your behalf.

For your information, the following are open for public comment now on issues that WILL affect your business:

- Timber Industry 'Code of Conduct' Forum; Brisbane 25 August. Email Doug Bartlett from QTIEWA, qtiewa@ozemail.com.au.
- TUMA Review (http://www.dpi.qld.gov.au/cps/rde/dpi/hs.xml/26_14271_ENA_HTML.htm)
- GBCA Mat 8 Timber Credit Review (<http://www.gbca.org.au/green-star/materials-category/timber-credit-review/2280.htm>)
- SEQ Climate Change Management Plan:
(<http://www.getinvolved.qld.gov.au/consultqld/index.cfm?go=consultonline.viewIssue&activityID=229>)

To reiterate, you can make your own comment or tell me your thoughts and I will present them on you behalf. At the end of the day, if you do not volunteer an opinion on anything when consultation has been specifically sought, you will not have a credible leg to stand on in debate if policy is passed or positions presented that you do not support.

WH&S LEGISLATION CHANGES - OPERATING A MOBILE CRANE

From 30 August 2009 an employer must not allow a person in charge of and/or operating a mobile crane (slewing/non-slewing) to also undertake their own dogging work or supervise a trainee dogger, even if the operator is also a licensed dogger.

The purpose of this is to clarify whether or not a person who holds both a mobile crane (slewing/non-slewing) licence and a dogging licence can:

- perform their own dogging work (i.e. leaving the crane operator's controls); or
- supervise and/or direct a trainee dogger at the same time as operating the crane (slewing/non-slewing).

WHSQ has determined, supported by a national decision of occupational health and safety authorities, that a mobile crane operator, working without a dogger, is not in a position to:

- exercise judgement in relation to the method of load slinging and take up of slings,
- rectify any emerging situation involving a trainee, or
- make judgements on load security and slinging position and landing of the load while the crane is in operation or is mobile..

The primary role of the crane operator is to perform the function of the crane operation in a safe manner. A crane operator's ability to perform this primary function is limited if he or she is required to leave the crane cabin to undertake/supervise dogging functions and slinging activities.

Further information

More information and practical advice on the slinging and directing of loads suspended from cranes can be found in:

- A Guide for Doggers, Safety Information Handbook
- Mobile Crane Code of Practice 2006
- Refer to attached technical guidance note.

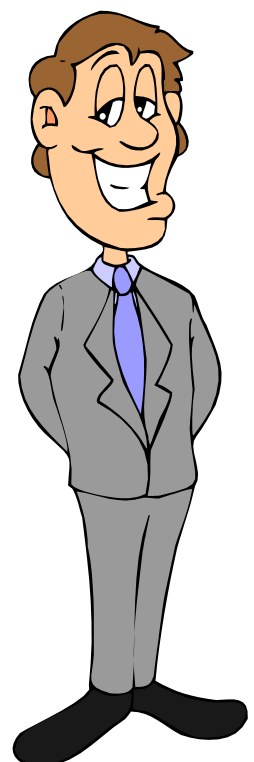
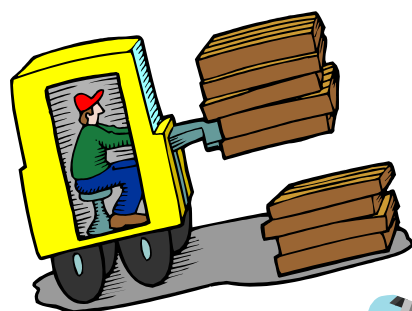
(Information directly sourced from Workplace Health & Safety Queensland website.)



RECRUITMENT UPDATE

We have recently been recruiting for a number of varied positions, which is positive to see that things are starting to look up in the industry. If you are thinking of recruiting someone, we may already have a fresh candidate on the books, or we are happy to start a specific search for you.

Don't forget that our recruitment loyalty program started the 1st of July, with many cost saving bonuses. The card is valid for 5 years so make sure you get the most out of your recruitment dollars. For more information on either our recruitment service or the loyalty program, please contact me on 3254 3166 or alicia@tabma.com.au.



TRAVEL INFO!

QANTAS ONLINE CHECK-IN PROCEDURE CHANGES



International Advance Seat Selection & International Online Check-in

Qantas has introduced international online check-in and advance seat selection, expanding the range of services available to customers.

International Online Check-in

Customers whose first sector of their itinerary is on a Qantas operated and marketed flight can check in and print their boarding pass between 24 hours and 2 hours prior to their flight departure. Customers may also enjoy a faster airport experience with dedicated Online Check-in counters for bag drop and visa checks.

International Advance Seat Selection

From 18 June 2009, Chairmans Lounge, Platinum, Gold and Silver Frequent Flyers travelling **internationally** will be able to request a seat via www.qantas.com once they have completed their reservation. By logging on to "[Manage Your Booking](#)", eligible Frequent Flyers will see a 'Select Seats' button which takes them to a seat map showing available seats to request for their international booking.

Please note for any Qantas domestic travel, a seating preference panel will be displayed on www.qantas.com with the opportunity for Eligible Frequent Flyers to enter an aisle or window preference for a domestic flight number.



TRAVELLING OVERSEAS?

Then a must visit website is www.smarttraveller.gov.au. This is the Australian governments travel advisory and consular assistance service. Register with them, so you can be contacted in an emergency. They offer a 24 hour emergency consular assistance, and you can subscribe to receive email updates, whenever travel advisories change. They have up to the minute travel bulletins, travel advisories, and travel tips. Currently they advise against travel to the following countries – Afghanistan, Burundi, Central African Republic, Chad, Iraq, Somali and Sudan.

For more information about this information, or other travel specials please contact Belinda.hall@travelcorp.com.au

ANNUAL LEAVE AT TABMA QUEENSLAND

We are running away! But only for a little while. Please be aware that in August and September both Alicia and I will be tripping overseas.

***Karen goes back to Japan for karaoke, theme park fun & chu-hi drinks
with her ex-students:***

August 22nd to September 5th

Alicia reunites with her posse in UK and visits French wineries:

September 5th to September 29th



Don't fret though, Kelly and Katie will be here the whole time, and as you can see our travel dates do not overlap (we will wave at each other in the air) so the office will still be well staffed. If you foresee that you will need the specific services provided by either myself or Alicia, please contact us prior to our departures so we can be sure to help you.



Senior First Aid

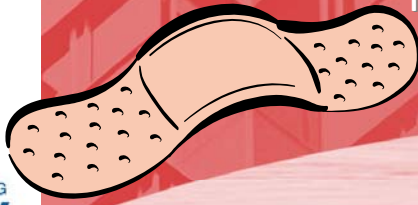
Limited to a total of 16 participants. 2 spaces already filled.

Timber & Building Materials Association (Queensland) Limited

500 Brunswick Street :: PO BOX 532

Fortitude Valley QLD 4006

P (07) 3254 3166 :: F (07) 3254 4599 :: E info-qld@tabma.com.au



Senior First Aid training aims to develop the knowledge and skills for a person to manage emergency first aid situations and deliver competent emergency care until the arrival of professional medical support. The course includes CPR.

ALAQ's Senior First Aid Course is delivered under the Australian Quality Training Framework and is nationally recognised.

The Australian Resuscitation Council recommends that First Aid certificates be renewed every 3 years and CPR be renewed every 12 months.

COURSE CONTENT

- Apply principles of First Aid.
- CPR.
- Asthma & Anaphylaxis Management.
- Treatment of infection, shock, fractures, bleeding & burns.
- Emergencies due to lack of oxygen, excess heat or cold, heart attack, stroke, asthma, diabetes and epilepsy.
- Management of common medical emergencies.
- Treatment of poisoning including venomous bites & stings.

- Profits generated by Surf Life Saving Queensland through commercial & community training are re-invested into volunteer members & affiliated life saving clubs throughout the state, providing safer beaches for Queenslanders.

DURATION

- Theory & Workbook Completed in Advance
- 8 Hours Face to Face Training & Assessment



DATE: Wednesday 23 September 2009

VENUE: Timber House
500 Brunswick Street
Fortitude Valley Qld 4006

TIME: 7.45am arrival
8.00am - 5.00pm

COST: \$150pp (TABMA Member)
\$165pp (Non-Member)
Includes tea/coffee, morning & afternoon tea, lunch, all course materials & certification.

PLEASE COMPLETE RESERVATION FORM BELOW AND RETURN BY FAX TO (07) 3254 4599

Name of Attendee

Address

Name of Attendee

Suburb/Post Code

Company

Email

Register at www.odysseytraining.com.au or call **07 3229 9505** to speak with a consultant.

5%
OFF

TABMA Queensland members receive 5% off scheduled training courses in Queensland.

Computer Training Courses	Level	Duration	Price	Aug	Sep	Oct	Nov	Dec	
Microsoft Office Programs									
Introduction to Computers	Intro	1 Day	\$335	☞	1	☞	2	☞	
Microsoft Office 2007 New Features	Upgrade	1 Day	\$335	3	☞	6	☞	2	
Microsoft Access 2002/2003	Intro	2 Days	\$710	6-7	3-4	1-2	☞	10-11	
Creating Queries and Reports in Microsoft Access 2002/2003	Inter	1 Day	\$355	☞	14	☞	20	☞	
Microsoft Access 2002/2003	Adv	2 Days	\$710	24-25	☞	☞	26-27	☞	
Microsoft Access 2007	Intro	2 Days	\$710	☞	☞	1-2	☞	☞	
Creating Queries and Reports in Microsoft Access 2007	Inter	1 Day	\$355	☞	14	☞	20	☞	
Microsoft Access 2007	Adv	2 Days	\$710	☞	☞	☞	26-27	☞	
VBA for Microsoft Access 2002/2003	Adv	2 Days	\$860	☞	17-18	☞	☞	☞	
Microsoft Excel 2002/2003	Intro	1 Day	\$335	5, 19	2, 15	5, 14, 21	4, 16	1, 21	
Microsoft Excel 2002/2003	Inter	1 Day	\$335	14, 26, 31	9, 18, 28	9, 20, 30	9, 19, 30	4, 22	
Microsoft Excel 2002/2003	Adv	2 Days	\$695	3-4, 27-28	7-8, 24-25	5-6, 22-23	5-6, 23-24	17-18	
Microsoft Excel 2007	Intro	1 Day	\$335	5	2	5	4	1	
Microsoft Excel 2007	Inter	1 Day	\$335	14	9	9	9	22	
Microsoft Excel 2007	Adv	2 Days	\$695	3-4	24-25	22-23	23-24	17-18	
VBA for Microsoft Excel 2002/2003	Adv	2 Days	\$860	24-25	☞	☞	11-12	☞	
Microsoft Outlook 2002/2003	Intro	1 Day	\$335	13	☞	26	3	☞	
Microsoft Outlook 2002/2003	Adv	1 Day	\$335	☞	23	☞	☞	11	
Microsoft Outlook 2007	Intro	1 Day	\$335	☞	☞	26	3	☞	
Microsoft Outlook 2007	Adv	1 Day	\$335	☞	23	☞	☞	11	
Microsoft PowerPoint 2002/2003	Intro	1 Day	\$335	7	8	2	13	3	
Microsoft PowerPoint 2002/2003	Adv	1 Day	\$335	18	☞	29	25	15	
Microsoft PowerPoint 2007	Intro	1 Day	\$335	☞	8	☞	13	☞	
Microsoft PowerPoint 2007	Adv	1 Day	\$335	18	☞	29	☞	15	
Microsoft Project 2002/2003	Intro	2 Days	\$710	☞	10-11	12-13	5-6	7-8	
Microsoft Project 2002/2003	Adv	2 Days	\$710	20-21	☞	☞	16-17	☞	
Microsoft Project 2007	Intro	2 Days	\$710	☞	☞	12-13	☞	☞	
Microsoft Project 2007	Adv	2 Days	\$710	☞	☞	☞	16-17	☞	
Microsoft Word 2002/2003	Intro	1 Day	\$335	6	1	7	11	9	
Microsoft Word 2002/2003	Inter	1 Day	\$335	17	16	14	18	14	
Microsoft Word 2002/2003	Adv	1 Day	\$335	26	☞	27	☞	16	
Creating Complex Documents in Microsoft Word 2002/2003	Adv	1 Day	\$335	☞	29	☞	25	☞	
Microsoft Word 2007	Intro	1 Day	\$335	☞	1	7	☞	9	
Microsoft Word 2007	Inter	1 Day	\$335	17	16	14	18	☞	
Microsoft Word 2007	Adv	1 Day	\$335	26	☞	27	☞	17	
Creating Complex Documents in Microsoft Word 2007	Adv	1 Day	\$335	☞	☞	28	☞	☞	
VBA for Microsoft Word 2002/2003	Adv	2 Days	\$860	☞	☞	15-16	☞	☞	
Microsoft Visio 2002/2003/2007 Professional	Intro	1 Day	\$335	31	30	28	25	16	
Publishing and Web Programs									
Adobe Acrobat 7.0/8.0/9.0	Intro	1 Day	\$355	☞	7	☞	2	☞	
Adobe Acrobat 7.0/8.0/9.0	Adv	1 Day	\$355	☞	☞	19	☞	☞	
Adobe Dreamweaver 8.0/CS3	Intro	2 Days	\$710	17-18	☞	☞	23-24	☞	
Adobe Flash MX2004/8.0	Intro	1 Day	\$355	☞	☞	30	☞	☞	
Adobe Illustrator CS2/CS3/CS4	Intro	2 Days	\$710	☞	3-4	☞	5-6	☞	
Adobe InDesign CS2/CS3/CS4	Intro	2 Days	\$710	27-28	22-23	20-21	12-13	14-15	
Adobe InDesign CS2/CS3/CS4	Adv	2 Days	\$710	20-21	☞	15-16	26-27	☞	
Adobe Photoshop CS2/CS3/CS4	Intro	2 Days	\$710	☞	14-15	12-13	19-20	☞	
Adobe Photoshop CS2/CS3/CS4	Adv	1 Day	\$355	4	☞	☞	30	☞	
Microsoft Publisher 2002/2003/2007	Intro	1 Day	\$355	☞	21	☞	☞	2	
Professional Development Training Courses									
Assertiveness		1 Day	\$425	3	4	2	6	11	
Certificate IV in Training and Assessment (TAA40104)*		8 Days	\$1695	Please call for scheduled dates.					
Change Management in Turbulent Times	NEW	1 Day	\$425	31	☞	23	☞	16	
Coaching and Feedback Skills for Managers		1 Day	\$425	☞	14	☞	16	☞	
Conflict Resolution		1 Day	\$425	☞	15	19	19	☞	
Creating Powerful Presentations		1 Day	\$425	4	☞	☞	4	☞	
Customer Service		1 Day	\$425	☞	9	☞	11	☞	
Dealing with Difficult Behaviour		1 Day	\$425	17	☞	5	☞	4	
Developing Leaders		2 Days	\$850	☞	17 & 24	☞	☞	8 & 15	
Effective People and Communication Skills		1 Day	\$425	5	1	1	5	3	
Emotional Intelligence – The Leading Priority		2 Days	\$850	☞	2-3	☞	25-26	☞	
Essential Administration Skills		2 Days	\$850	6 & 13	☞	9 & 16	☞	7 & 14	
Evaluate and Build Teams		1 Day	\$425	21	☞	☞	☞	☞	
Generations @ Work		1 Day	\$425	7	☞	☞	9	☞	
Innovative Thinking and Problem Solving	NEW	1 Day	\$425	28	☞	6	☞	17	
Negotiation Skills		1 Day	\$425	☞	21	26	10	☞	
Performance Management		2 Days	\$850	☞	28-29	☞	☞	☞	
Project Management Fundamentals		2 Days	\$850	10-11	☞	12-13	☞	1-2	
Resilience in the Workplace	NEW	1 Day	\$425	☞	30	☞	3	☞	
Selling Skills		2 Days	\$850	☞	10-11	☞	17-18	☞	
Supervision and Management of People		2 Days	\$850	18-19	7-8	7-8	12-13	9-10	
Time Management		1 Day	\$425	14	25	28	20	18	
Workgroup Facilitation		1 Day	\$425	☞	☞	☞	24	☞	
Writing Skills for Business		1 Day	\$425	24	22	21	27	☞	

What do you need to know?

Full day course fees include GST, workbook, certificate of attendance, lunch, refreshments and 30 days post course support. Dates are correct at time of printing and price is subject to change without notice.

* Qualifications issued by Quality Unlimited and are excluding GST and lunch. ☞ Please call for upcoming dates.

Register at www.odysseytraining.com.au or call 1300 793 951 to speak with a consultant.

5%
OFF

TABMA Queensland members receive 5% off scheduled training courses in Queensland.

Course	Location	Price	Scheduled Dates
Assertiveness 1 Day	Brisbane	\$425	4 Sep, 2 Oct, 6 Nov, 11 Dec, 11 Jan, 1 Feb
	Cairns	\$425	13 Aug, 12 Nov, 3 Feb
	Melbourne	\$473	22 Sep, 27 Jan
	Sydney	\$473	6 Oct, 21 Jan
	Townsville	\$425	13 Oct, 28 Jan
Certificate IV in Training and Assessment (TAA40104)	Brisbane*	\$1695	Please call for scheduled dates.
	Melbourne*	\$1695	Please call for scheduled dates.
	Sydney*	\$1695	Please call for scheduled dates.
Change Management in Turbulent Times 1 Day	Brisbane	\$425	31 Aug, 23 Oct, 16 Dec, 12 Feb
	Melbourne	\$473	27 Aug, 19 Nov, 18 Feb
	Sydney	\$473	27 Oct, 19 Jan
Coaching and Feedback Skills for Managers 1 Day	Brisbane	\$425	14 Sep, 16 Nov, 15 Feb
	Cairns	\$425	25 Aug, 24 Nov, 24 Feb
	Melbourne	\$473	8 Sep, 25 Feb
	Townsville	\$425	6 Oct
Conflict Resolution 1 Day NEW	Brisbane	\$425	15 Sep, 19 Oct, 19 Nov, 18 Jan, 17 Feb
	Cairns	\$425	5 Nov, 11 Feb
	Melbourne	\$473	10 Sep, 24 Nov, 28 Jan
	Sydney	\$473	21 Oct, 2 Dec, 18 Feb
	Townsville	\$425	25 Aug, 8 Oct, 27 Jan
Creating Powerful Presentations 1 Day	Brisbane	\$425	4 Nov, 3 Feb
	Cairns	\$425	15 Sep, 1 Dec
	Melbourne	\$473	1 Oct, 3 Feb
	Sydney	\$473	24 Nov
	Townsville	\$425	26 Nov
Customer Service 1 Day	Brisbane	\$425	9 Sep, 11 Nov, 13 Jan
	Cairns	\$425	3 Nov
	Melbourne	\$473	6 Oct, 9 Feb
	Sydney	\$473	3 Dec
	Townsville	\$425	8 Sep, 3 Dec
Dealing with Difficult Behaviour 1 Day	Brisbane	\$425	17 Aug, 5 Oct, 4 Dec, 2 Feb
	Cairns	\$425	20 Oct, 21 Jan
	Melbourne	\$473	3 Dec
	Sydney	\$473	1 Oct, 28 Jan
	Townsville	\$425	10 Sep, 10 Dec
Developing Leaders 2 Days	Brisbane	\$850	17 & 24 Sep, 8 & 15 Dec
	Cairns	\$850	29-30 Sep
	Melbourne	\$946	8-9 Dec
	Sydney	\$946	16-17 Feb
	Townsville	\$850	26-27 Oct
Effective People and Communication Skills 1 Day	Brisbane	\$425	1 Sep, 1 Oct, 5 Nov, 3 Dec, 21 Jan, 26 Feb
	Cairns	\$425	20 Aug, 21 Oct, 19 Jan
	Melbourne	\$473	3 Sep, 3 Dec
	Sydney	\$473	8 Oct, 2 Feb
	Townsville	\$425	3 Sep, 24 Nov, 23 Feb
Emotional Intelligence – The Leading Priority 2 Days	Brisbane	\$850	2-3 Sep, 25-26 Nov, 24-25 Feb
	Cairns	\$850	10-11 Nov
	Melbourne	\$946	25-26 Nov
	Sydney	\$946	9-10 Dec
	Townsville	\$850	26-27 Aug, 17-18 Nov, 24-25 Feb
Essential Administration Skills 2 Days	Brisbane	\$850	6 & 13 Aug, 9 & 16 Oct, 7 & 14 Dec, 4 & 11 Feb
	Cairns	\$850	2-3 Sep, 2-3 Dec
	Melbourne	\$946	27-28 Oct, 1-2 Feb
	Sydney	\$946	1-2 Sep, 15-16 Dec
	Townsville	\$850	4-5 Nov, 9-10 Feb

Course	Location	Price	Scheduled Dates
Evaluate and Build Teams 1 Day	Brisbane	\$425	21 Aug, 20 Jan
	Cairns	\$425	27 Oct, 25 Feb
	Sydney	\$473	13 Oct, 4 Feb
	Townsville	\$425	1 Sep, 19 Jan
Generations @ Work 1 Day	Brisbane	\$425	9 Nov, 5 Feb
	Townsville	\$425	22 Oct, 18 Feb
Innovative Thinking and Problem Solving 1 Day NEW	Brisbane	\$425	28 Aug, 6 Oct, 17 Dec, 16 Feb
	Melbourne	\$473	26 Aug, 8 Oct, 1 Dec
	Sydney	\$473	22 Oct, 7 Dec, 9 Feb
Negotiation Skills 1 Day	Brisbane	\$425	21 Sep, 26 Oct, 10 Nov, 29 Jan
	Cairns	\$425	1 Sep, 8 Dec
	Melbourne	\$473	13 Oct, 11 Feb
	Sydney	\$473	3 Sep, 1 Dec
	Townsville	\$425	5 Aug, 3 Nov, 11 Feb
Performance Management 2 Days	Brisbane	\$850	28-29 Sep, 27-28 Jan
	Townsville	\$850	14-15 Oct, 20-21 Jan
Project Management Fundamentals 2 Days	Brisbane	\$850	10-11 Aug, 12-13 Oct, 1-2 Dec, 8-9 Feb
	Melbourne	\$946	17-18 Nov
	Sydney	\$946	4-5 Nov
Resilience in the Workplace 1 Day NEW	Brisbane	\$425	30 Sep, 3 Nov, 12 Jan
	Cairns	\$425	6 Oct
	Melbourne	\$473	21 Oct, 10 Feb
	Sydney	\$473	8 Sep, 27 Jan
	Townsville	\$425	9 Dec
Selling Skills 2 Days	Brisbane	\$850	10-11 Sep, 17-18 Nov
	Melbourne	\$946	23-24 Sep, 19-20 Jan
	Sydney	\$946	16-17 Sep, 20-21 Jan
	Townsville	\$850	28-29 Oct, 3-4 Feb
Supervision and Management of People 2 Days	Brisbane	\$850	7-8 Sep, 7-8 Oct, 12-13 Nov, 9-10 Dec, 14-15 Jan, 18-19 Feb
	Cairns	\$850	18-19 Nov, 16-17 Feb
	Melbourne	\$946	3-4 Nov, 16-17 Feb
	Sydney	\$946	11-12 Aug, 17-18 Nov
	Townsville	\$850	29-30 Sep, 1-2 Dec
Time Management 1 Day	Brisbane	\$425	14 Aug, 25 Sep, 28 Oct, 20 Nov, 18 Dec, 22 Jan, 10 Feb
	Cairns	\$425	24 Sep, 9 Dec
	Melbourne	\$473	20 Aug, 10 Nov, 23 Feb
	Sydney	\$473	15 Oct, 20 Jan
	Townsville	\$425	22 Sep, 12 Nov, 16 Feb
Workgroup Facilitation 1 Day	Brisbane	\$425	24 Nov
Writing Skills for Business 1 Day	Brisbane	\$425	24 Aug, 22 Sep, 21 Oct, 27 Nov, 19 Jan, 22 Feb
	Cairns	\$425	15 Oct, 20 Jan
	Melbourne	\$473	20 Oct, 24 Feb
	Sydney	\$473	29 Oct, 11 Feb
	Townsville	\$425	17 Sep, 8 Dec

What do you need to know?

Full day course fees include GST, workbook, certificate of attendance, lunch, refreshments and 30 days post course support. Dates are correct at time of printing and price is subject to change without notice.

* Qualifications issued by MRWed and are excluding GST and lunch.

Where are we located?

Brisbane – Level 4, 360 Queen Street, Brisbane

Cairns – Rydges Tradewinds Cairns, 137 The Esplanade, Cairns

Melbourne – Level 8, 350 Collins Street, Melbourne

Sydney – Goldfields House, Level 8, 1 Alfred Street, Circular Quay, Sydney

Townsville – Mercure Inn, Woolcock Street, Townsville



Workplace Health and Safety Queensland

Technical guidance note

Operating a mobile crane (slewing/non-slewing)

Purpose

To clarify whether or not a person who holds both a mobile crane (slewing/non-slewing) licence and a dogging licence can:

- perform their own dogging work (i.e. leaving the crane operator's controls); or
- supervise and/or direct a trainee dogger at the same time as operating the crane (slewing/non-slewing).

Note: This guidance note does not apply to:

- the operation of a vehicle loading crane with a capacity of 10 metre tonnes or more, or
- a bridge and gantry crane where the load being lifted by remote control is more than five tonne and:
 - I. where the crane has the ability to perform three or less powered operations
 - II. which is controlled from a location remote to a cabin or control station, and
 - III. where the load is always in full view of the operator.

A number of incidents have occurred in Queensland and other parts of Australia in which serious injuries have resulted where the crane operator has left the crane's cabin to sling their own loads or to supervise a trainee dogger.

Determination

Workplace Health and Safety Queensland (WHSQ) has determined, with the support of a national decision among occupational health and safety authorities that a mobile

crane operator is not in a position to:

- exercise judgement in relation to the method of load slinging and take up of slings
- rectify any emerging situation involving a trainee, or
- make judgements on load security and slinging position and landing of the load while the crane is in operation or is mobile.

The primary role of the crane operator is to perform the function of the crane operation in a safe manner. A crane operator's ability to perform this primary function is limited if he or she is required to leave the crane cabin to undertake/supervise dogging functions and slinging activities.

Australian standards

The *Australian Standard AS2550.1-2002 (Cranes, Hoists and Winches Safe Use and General Requirements)* supports the need for crane operators to be in full control of their crane at all times.

Following consultation with industry stakeholders and in accordance with the Australian Standard, WHSQ has determined that a person in control of and/or operating a mobile crane (slewing/non-slewing) must not:

- leave the crane operator controls unless in an emergency or after the following actions have been taken:
 - removed all loads and lifting slings from the hook or dedicated lifting device

- raised the crane hook to a position where it is clear of other operations namely loads and slings, and
- disabled all powered crane motions.

Or

- supervise and/or direct a trainee dogger.

This requirement applies regardless of whether the mobile crane operator holds the appropriate licence to perform high risk work as a dogger or rigger.

Conclusion

An employer must not allow a person in charge of and/or operating a mobile crane (slewing/non-slewing) to also undertake their own dogging work or supervise a trainee dogger, even if the operator is also a licensed dogger.

When does this requirement take effect?

As part of the implementation process stakeholders will be given until 30 August 2009 to comply with this guidance note.

Further information

More information and practical advice on the slinging and directing of loads suspended from cranes, can be found in:

- *A Guide for Doggers, Safety Information Handbook*, and
- *Mobile Crane Code of Practice 2006*.

These training guides can be purchased from WHSQ offices or downloaded by visiting www.worksafe.qld.gov.au.

The *Mobile Crane Code of Practice 2006* is also available from SDS Publications on (07) 3119 6900 or www.sdspublications.qld.gov.au.

© The State of Queensland (Department of Justice and Attorney General, Workplace Health and Safety Queensland) 2009.

Copyright protects this document. The State of Queensland has no objection to this material being reproduced, but asserts its right to be recognised as author of the original material and the right to have the material unaltered.

The material presented in this publication is distributed by the Queensland Government as an information source only. The State of Queensland makes no statements, representations, or warranties about the accuracy or completeness of the information contained in this publication, and the reader should not rely on it. The Queensland Government disclaims all responsibility and all liability (including, without limitation, liability in negligence) for all expenses, losses, damages and costs you might incur as a result of the information being inaccurate or incomplete in any way, and for any reason.

Workplace Health and Safety Queensland, Department of Justice and Attorney General

Technical Guidance Note – Operating a mobile crane
PN 10094 Version 1. Last updated 1 June 2009