



# TABMATALK

DECEMBER  
2008

## INSIDE THIS ISSUE

New TABMA Member: The Village Timbers	1
2008-2009 TABMA QLD Board of Directors	1
Office Christmas Closure	1
Timber A-Frame Incident	2
February Events	3
Safe Work Related Driving	4
Membership Anniversaries & Trainee Completion	4

## NEW MEMBER: THE VILLAGE TIMBERS

The Village Timbers located in Logan Village is under the new ownership of Jamie Pouncey. Starting his timber industry career as a TABMA trainee, Jamie has more than 6 years experience and is determined to build a business reputation for supplying quality product.

The Village Timbers supplies:

- Hardwood
- Decking
- Treated Pine
- Trusses
- Flooring
- Frames
- Fencing



The Village Timbers also offers a basic design capability for pergolas and decks and a plan take off service.

Open from 6.30am to 4.30pm Monday to Friday and offering a delivery service to local sites across the region.

### CONTACT DETAILS:

31-33 Centenary Place  
LOGAN VILLAGE QLD 4207  
Ph: (07) 5546 8007  
Fax: (07) 5546 8329

Email: [Jamie@villagetimbers.com.au](mailto:Jamie@villagetimbers.com.au)

Web: [www.villagetimbers.com.au](http://www.villagetimbers.com.au)



## TIMBER & BUILDING MATERIALS ASSOCIATION (QLD) LTD

Unit 4/970 Logan Road  
PO BOX 32  
Holland Park Qld 4121  
Ph: (07) 3847 4637  
Fax: (07) 3847 4632  
Email: [info-qld@tabma.com.au](mailto:info-qld@tabma.com.au)  
Web: [www.tabma.com.au](http://www.tabma.com.au)

## 2008-2009 BOARD OF DIRECTORS:

The TABMA QLD Board of Directors is now 14 strong with the re-election of all 2007-08 Directors, and the inaugural election of two new representatives. This is an excellent representation across wholesale, manufacturing and merchant sectors. Welcome to all! The board is comprised of:

- \* Keith Maitland, Bretts Transglobal Timbers (Chairman)
- \* Paul Rutledge, Gunnensen Pty Ltd (Vice-Chairman)
- \* Michael Gaske, Ozline Timbers Pty Ltd
- \* Steve Johnson, Porters Home & Building Centre
- \* Myles Forsyth, Forsyth & Romano Pty Ltd
- \* Mitch O'Mara, Tradeware Building Supplies Pty Ltd
- \* Don Towerton, Thora Wholesale Timber Pty Ltd
- \* Graham Leddy, Versace Timbers Pty Ltd
- \* Mal Goatham, Pacific Wood Products Pty Ltd
- \* Justin Lanyon, 5 Star Timbers Pty Ltd
- \* Mark Gilles, Brims Builders Hardware Pty Ltd
- \* John Eggleton, Peachester Timbers Pty Ltd
- \* Roger Healy, Simmonds Lumber Pty Ltd
- \* Brad Ford, Fineline Timbers Pty Ltd



## TABMA QLD CHRISTMAS OFFICE CLOSURE:

The TABMA QLD office will close for Christmas on Friday 19th December 2008, reopening on Monday 5th January 2009. The Board of Directors and TABMA staff would like to wish everyone a very Merry Christmas & Happy New Year!

# TIMBER A-FRAME INCIDENT



The aftermath of the A-Frame collapse. Fortunately nobody was injured in the incident.



Melbourne Cup day 2008 was not a fun-filled thrill for a Queensland timber merchant when an extremely serious incident occurred involving the collapse of timber A-Frame racking. The Queensland Government WPHS inspection deemed the racking fell due to overloading. The inspector highlighted that the lack of information displayed/provided to workers about the load capacity of racking was a key source of risk.



The issue we wish to make all members of industry aware of is that those premises who use racking need to ensure their racking is suitably engineered and certified to guard against liability. In addition, organisations need to implement and maintain controls relating to maintenance and an inspection regime for racking systems.



In response to this incident the merchant has used Macrack in Brisbane to construct and install engineered and certified A-Frame racks, complete with a maintenance checklist that has been included into company procedures. Staff will also be trained on the safe and recommended practice of loading and unloading pallet and A-Frame racking.

Contact details for Macrack:  
PO BOX 2227  
40-42 Devlan Street  
MANSFIELD QLD 4112  
Ph: (07) 3343 9788  
Email: [sales@macrack.com.au](mailto:sales@macrack.com.au)  
Web: [www.macrack.com.au](http://www.macrack.com.au)

The engineered and certified Macrack system installed to replace the timber A-Frame racking.



# UPCOMING CALENDAR OF EVENTS

**4th  
February  
2009**



Peter Bards, Executive Director of the Australian Construction Council, will present short and long term forecasts of construction and economic activity, including:

- The economic outlook including macro factors.
- Recent trends in activity and industry employment.
- The affect of population trends and interest rates.
- Demand forecasts for **residential, non-residential and engineering** projects.

## CONSTRUCTION & ECONOMIC FORECAST INFORMATION BREAKFAST

**DATE:** Wednesday 4th February 2009  
**TIME:** 7.30am Breakfast Served  
8.00am Presentation Begins  
**VENUE:** 433 on Logan Conference Centre  
433 Logan Road, Stones Corner  
**COST:** MEMBER RATE: \$45 per person  
NON-MEMBER RATE: \$55 per person  
**RSVP:** 30th January 2009

Full Hot Breakfast included.  
Total of 65 seats available.  
Complete attached reservation form.

## TIMBER PRODUCT KNOWLEDGE INFORMATION SESSION

Due to the huge amount of reservations we have received for this information seminar, we have organised an additional session on the same day.

**SESSION 1:** 8.00am to 12.00pm  
**SESSION 2:** 12.30pm to 4.30pm

**DATE:** Wednesday 25th February 2009  
**VENUE:** Asian Pacific Timber Marketing  
100 Potassium Street, NARANGBA  
**COST:** MEMBER RATE: \$45 per person  
NON-MEMBER RATE: \$55 per person

Morning or Afternoon Tea Included.  
**Only 15 seats still available.**



### INFORMATION COVERED INCLUDES:

- Timber Grading
- Timber Storage
- Durability of Timber
- Hazard Levels/Timber Treatment
- Differences in Hardwood and Softwood
- Engineered Timber Products

Complete the attached reservation form and fax back to 3847 4632.

**25th  
February  
2009**

**23-25th  
March  
2009**



## QUEENSLAND TIMBER INDUSTRY OPERATIONS BUS TOUR

Accompany industry personnel on a three day tour of South East Queensland timber industry operations. Open to all industry sectors throughout Australia, this is a fantastic educational and networking opportunity. Includes\* guided tours of:

\*Subject to confirmation/change

- Hoop Pine Green & Dry Mill
- Hardwood Green & Dry Mill
- MDF Manufacturing
- Logging/Nursery Operations
- Softwood Green & Dry Mill, Grading, Finger Jointing, MGP.
- Laminated Beams
- Preservative Treatment
- LVL, I-Beam & Mouldings Plant
- Recycled Timber Processing

**DATES:** 23rd to 25th March 2009  
**COST:** \$550 per person (incl. GST)  
Includes twin share accommodation, all meals, bus hire, protective equipment.  
*Single room surcharge of \$100.*  
**RSVP:** 11 February 2009

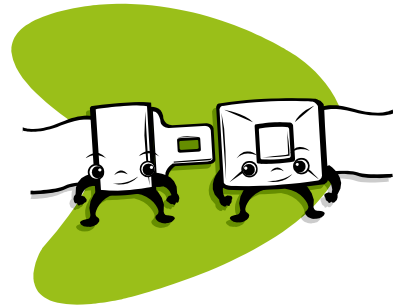
Call Karen for more information on 3847 4637. Numbers are limited so to ensure your place is reserved complete the attached form and fax back to TABMA QLD on 3847 4632.

# GUIDE TO SAFE WORK RELATED DRIVING

---

The Transport Accident Commission (TAC) and Worksafe Victoria have produced a handbook, 'Guide to Safe Work Related Driving' for workplaces. The aim of this handbook is to be a general guide to assist in reducing deaths and injuries resulting from work related driving. The information covered includes:

- OHS Law and Work Related Driving Safety
- Risk Management and Fleet Management
- Planning for Work Related Driving Safety
- Managing Risk Factors on the Road
- Monitor and Review Work Related Driving Safety



In the Introduction of this guide it is outlined that work related driving in Australia is a major risk exposure for employers. Research findings described include:

- Fleet vehicles have a higher rate of involvement in crashes per 10,000 registered vehicles per year than non-fleet vehicles.
- Vehicle accidents represent 41% of all compensated work fatalities (data from the Australian Safety and Compensation Council, Compendium of Workers Compensation Statistics 2004-05, May 2007).

Given this level of risk there are benefits to implementing a work related driving safety program in your workplace. The guide is built on good OHS practice and provides information on how to develop work-related driving safety policies. This document can be downloaded in pdf format from the Victorian Government Website;

<http://www.worksafe.vic.gov.au/wps/wcm/connect/WorkSafe/Home/Forms+and+Publications/Publications/Guide+to+safe+work+related+driving+A+handbook+to+workplaces>

---

## TABMA MEMBERSHIP ANNIVERSARIES

---

**HAPPY ANNIVERSARY!!**

For the month of December, the following TABMA QLD members are celebrating their membership anniversaries. Thank you for your fantastic support of the Association!

**Finlayson Timber & Hardware**  
~ 8 YEARS ~

**Fineline Timbers**  
~ 7 YEARS ~



**Sunstate Timbers**  
~ 3 YEARS ~

**Disprax**  
~ 3 YEARS ~

---

## TRAINEESHIP COMPLETION

---

Congratulations to Christine Cook who completed her Certificate III in Business Administration traineeship this month. Christine was hosted to Versace Timbers Pty Ltd.

# CONSTRUCTION & ECONOMIC FORECAST



## INFORMATION BREAKFAST

Presenting short and long term forecasts of construction and economic activity, our guest speaker will share:

- The economic outlook including macro factors.
- Recent trends in activity & industry employment.
- Affect of population trends & interest rates.
- Demand forecasts for residential, non-residential and engineering projects.

**DATE:** Wednesday 4th February, 2009

**TIME:** 7.30am Hot Breakfast Served  
8.00am Presentation Begins

**VENUE:** 433 on Logan Conference Centre  
433 Logan Road  
Stones Corner Qld 4120

**COST:** Members: \$45 PP (inc. GST)  
Non-members: \$55 PP (inc. GST)

**RSVP:** 30th January, 2009

A limit of 65 seats available.  
Parking information attached.



**GUEST PRESENTER:**  
**Mr Peter Barda**  
**Construction Forecasting Council**

Peter Barda is the Executive Director of the Australian Construction Industry Forum (ACIF), the peak consultative forum for the building and construction industry in Australia. ACIF's members are the national organisations representing investors, designers, planners, constructors, developers and facility managers. Peter was formerly CEO of the Property Council of Australia, and of the Commonwealth Government's Construction Industry Development Agency. He is also involved in development of major infrastructure projects, including the Surat Basin Rail project in Queensland.

**Please complete the form below & return by fax (07) 3847 4632, email [karen@tabma.com.au](mailto:karen@tabma.com.au) or phone our office on (07) 3847 4637**

Contact

Company

Email

Name

Address

Name

Phone

Name



# Timber Product Knowledge Information Sessions

This half day information session will cover information including:

- ☆ Timber Grading  
(What is grading & why we grade).
- ☆ Timber Storage  
(Storage & moisture content).
- ☆ Durability of timber.
- ☆ Hazard Levels / Timber Treatment  
(Uses of treated timber).
- ☆ Timber Applications  
(Including physical & mechanical properties for use in timber).
- ☆ Differences in hardwood & softwood.
- ☆ Use of engineered timber products.

**DATE:** Wednesday 25th February 2009

**SESSION 1:** Arrive 7.45am  
Training 8.00am - 12.00pm

**SESSION 2:** Arrive 12.15pm  
Training 12.30am - 4.30pm

**VENUE:** Asian Pacific Timber Marketing  
100 Potassium Street  
NARANGBA QLD 4504

**COST:** Member Rate - \$45 per person  
Non-Member Rate - \$55 per person  
Includes Morning/Afternoon Tea

**RSVP:** 13th February 2009  
*Limited places available.*



Please complete this form and  
fax back to (07) 3847 4632,  
or email [karen@tabma.com.au](mailto:karen@tabma.com.au)  
to confirm your reservation.



Contact

Company

Email

Name

Address

Name

Phone

Name

# Queensland Timber Industry Bus Tour

Accompany industry personnel on a three day tour of South East Queensland timber industry operations.

Open to all industry sectors; forestry, sawmilling, manufacturing, wholesalers, merchants, specifiers, engineers and architects, this tour is a fantastic educational and networking opportunity.

Organisers and hosts for the tour include Colin MacKenzie (Timber Queensland), Norm Forbes (ex-Hyne), John Muller (ex-Tasbeam), Don Towerton (Thora Wholesale Timbers & Hoo Hoo Club 218), Jim Bowden (Timber & Forest E-News) & Karen Johnston (TABMA QLD).

**WHEN:** March 2009:- Monday 23, Tuesday 24 & Wednesday 25

**COST:** \$550 per person (incl GST)  
Includes twin accommodation\*, all meals, bus hire, protective equipment.  
*\*Single room surcharge of \$100 applies*

**PAYMENT:** Cheques, Credit Card & Direct Deposit  
Made payable to TABMA QLD  
PO BOX 107, Surry Hills NSW 2010  
Bank: ANZ Haymarket,  
A/c Name: TABMA QLD  
BSB: 012-204  
A/c: 1087-53282

Confirmation of registration is subject to full payment.  
Credit Card payments attract 2% additional charge.

## INCLUDES\* GUIDED TOURS OF:

- ✧ Hoop Pine Green & Dry Mill  
Hyne Imbil & Melawondi
- ✧ Hardwood, Green & Dry Mill  
Robertson Bros. Gympie
- ✧ MDF Manufacturing  
Laminex
- ✧ Logging/Nursery Operations  
Tuan/Toolara Plantations
- ✧ Softwood Green & Dry Mill,  
Grading, Finger Jointing, MGP.  
Hyne Tuan
- ✧ Hardwood Green & Dry Mill  
Dale & Meyers Maryborough
- ✧ Laminated Beams  
Hyne Glulam
- ✧ Preservative Treatment  
Dale & Meyers Tiaro
- ✧ LVL, I-Beam & Mouldings Plant  
Hyne Virginia
- ✧ Recycled Timber Processing  
Kennedy's Classic Aged Timbers

Numbers are Limited

\* Subject to confirmation/change

**Closing date for reservations is 11 February 2009.** Complete the form below and return by fax, (07) 3847 4632 or email, [karen@tabma.com.au](mailto:karen@tabma.com.au). For more information call Karen Johnston on (07) 3847 4637

.....  
Attendee

.....  
Attendee

.....  
Company

.....  
Phone

.....  
Email

.....  
Address

.....  
Fax

A Joint Queensland Timber Industry  
Association Venture  
Timber Queensland :: Hoo Hoo Club  
218 :: TABMA Queensland

