

# TABMA

QUEENSLAND  
QUALITY • SERVICE • INTEGRITY

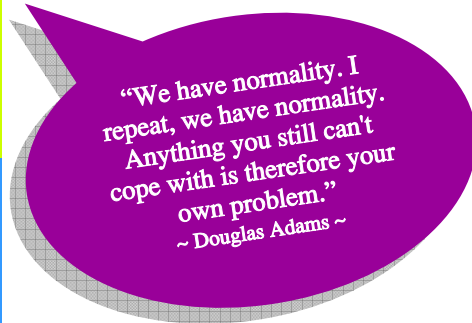
Timber & Building Materials  
Association (QLD) Ltd

PO BOX 32  
4/970 Logan Road  
Holland Park Q 4121

Ph: (07) 3847 4637  
Fax: (07) 3847 4632  
Email: info-  
qld@tabma.com.au

NOVEMBER 2008

# TABMA ACTA II K



## INSIDE THIS ISSUE:

Construction & Economic Forecast Information Breakfast	1
TABMA QLD AGM	1
Winners Circle Bus Tour	2
AWS Strapping Christmas Competition	2
TABMA NSW Gala Dinner 2008 Report	3
Veolia Recycling Special Offer	3
Queensland Timber Industry Bus Tour	4
Completion Congratulations	4
New TABMA Member Service Discounts	5

# CONSTRUCTION & ECONOMIC FORECAST INFORMATION BREAKFAST

## ~ Wednesday 4 February 2009 ~

With guest speaker Peter Barda from the **Construction Forecasting Council**, this seminar will present information on:

- The economic outlook including macro factors.
- Recent trends in activity & industry employment.
- Affect of population trends & interest rates.
- Demand forecasts for residential, non-residential and engineering projects.

Complete the attached reservation form and return to our office by 30th January 2009.

**VENUE:**  
433 on Logan  
Conference Centre  
433 Logan Road,  
Stones Corner

**TIME:**  
7.30am Breakfast Served  
8.00am Presentation

**COST:**  
Member Rate -  
\$45 per person  
Non-Member Rate -  
\$55 per person

*Limit of 65 seats available.*

## TABMA QLD AGM

The TABMA QLD AGM will be held:

**DATE:** Wednesday 26th November 2008  
**TIME:** 9.30am  
**VENUE:** The Chalk Hotel  
735 Stanley Street, Woolloongabba



Official documentation was issued earlier this month. Please indicate your attendance by 21st November 2008. The 2008 Annual Report is available to download on our website;

[www.tabma.com.au](http://www.tabma.com.au) - Queensland - Annual Reports

# WINNERS CIRCLE BUS TOUR



## FREE FOR TABMA MEMBERS!!

Spend a day touring the premises of 5 category winners from the 2008 Queensland Timber Industry Awards.

Network with other industry representatives, meet and greet the people behind the scenes and witness first hand the business operations of those who excel within the industry.

Morning tea and lunch provided.  
\$20 per person for Non-TABMA Members.

### SPONSORED BY:



Queensland Timber Importers Exporters

**Q T I E W A**

and Wholesalers Association Inc

### ITINERARY:

7.30am	Meet at Mt Gravatt Garden City
8.00am	Bus Depart
9.00am-9.30am	Simmonds Lumber
10.00am-10.30am	Tradeware Building Supplies
10.30am-10.50am	Morning Tea
11.30am-12.30pm	Langs Frame & Truss (Yatala)
	Langs Building Centre (Yatala)
12.30pm-1.30pm	Lunch
2.00pm-2.30pm	Corbek Timber Preservation
3.30pm	Arrive back Mt Gravatt

**42% SEATS ALREADY RESERVED!**

Complete the attached reservation flyer and fax to 07 3847 4632.

# AWS CHRISTMAS COMPETITION



**WIN PRIZES!!!**



**EXCLUSIVE FOR  
TABMA  
MEMBERS**

Spend over \$500 with AWS, mention that you're a TABMA member and go into the WEEKLY draw to win great prizes!

- WEEK 1** - 4 movie tickets, includes 2 Gold Class tickets. (Draw 21/11/08)
- WEEK 2** - \$100 Myer gift card voucher. (Draw 28/11/08)
- WEEK 3** - \$120 Outdoor feast hamper. (Draw 5/12/08)
- WEEK 4** - MAJOR PRIZE \$500 Coles Myer Card. (Draw 12/12/08)

### IT'S SIMPLE TO ENTER!!

Place an order over \$500 with AWS to instantly go into the draw.

PH 1800 023 890 :: EMAIL [sales@austwarehouse.com.au](mailto:sales@austwarehouse.com.au)

WEB [www.austwarehouse.com.au](http://www.austwarehouse.com.au)



# NSW TABMA ANNUAL DINNER

The Crystal Ballroom at Luna Park overlooking Sydney Harbour was the backdrop on Friday 7th November for the 2008 TABMA NSW Annual Dinner. The 223 industry representatives in attendance enjoyed fine dining, an informative presentation from Westpac Banking Group Senior Economist, Justin Smirk and danced the night away to tunes from the band. Congratulations to Melanie Firke from TABMA NSW for organizing a successful networking celebration.



**Canterbury Timber:**  
Narelle & Daryl Schmidt



**TABMA NSW:**  
Scott Stanford, Joyce Lopez & Kevin Liu



**Gunnensen Pty Ltd:**  
John Wilson, Mark Willey, Rob Jackson, & Daniel Smith



Action on the dance floor



**TABMA NSW Director & Chairman:**  
Brenton Christopher, John Cook & Sons & Peter Hutchinson, Mitek

## RECYCLING SPECIAL OFFER

Exclusive to TABMA QLD members, Veolia is offering special rates on the following recycling products:

- Fluorescent Tubes Recycle Pack (holds 120 x 5ft fluros) - \$160.
- Dry Battery and Mobile Pales - \$220 per pale.

Pricing for E-Waste is available on application and dependant on site location and volumes. All prices are subject to delivery costs outside the metro area.

For more information on how the system works, visit our website, [www.tabma.com.au/information](http://www.tabma.com.au/information) sheets and download the VES Recycle Solutions Brochure.



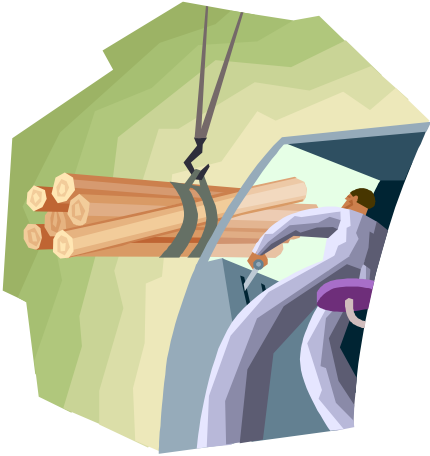
**CALL 1300 134 134**

to be transferred to a Veolia Area Manager



# QUEENSLAND TIMBER INDUSTRY BUS TOUR

March 2009:  
23rd - 25th



All sectors of industry from foresters to architects and everyone in between are invited to attend a three day tour of South East Queensland's timber operations. Industry hosts include Colin MacKenzie (Timber Queensland), Norm Forbes (ex-Hyne), John Muller (ex-Tasbeam), Don Towerton (Thora Wholesale Timbers/Hoo Hoo Club 218), Jim Bowden (Timber & Forest E-News) and Karen Johnston (TABMA QLD).

This fantastic networking opportunity will also be extremely informative as the itinerary\* includes visits to:

- Hoop Pine Green & Dry Mills
- Hardwood Sawmill
- MDF Manufacturing
- Logging/Nursery Operations
- Softwood Green & Dry Mills, Grading, Finger Jointing, MGP etc.
- Hardwood Green & Dry Mill
- Laminated Beam Plant
- Preservative Treatment Plant
- LVL Plant
- Recycled Timber Processing Plant

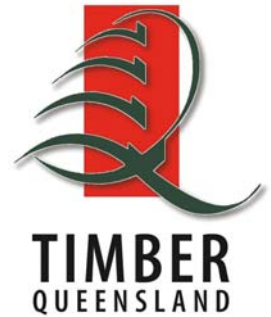
Total cost for this three day event is \$550 per person (incl. GST) which includes twin share accommodation, all meals, bus hire and protective equipment. Confirmation of reservation is subject to receipt of full payment.

Numbers are limited so get in quick to reserve your seat. Please complete the attached reservation form and return to TABMA QLD by fax or email. Closing date for reservations is 11 February 2009. For more information contact Karen Johnston on (07) 3847 4637.

*\* Subject to confirmation/change*

A joint Queensland  
Timber Industry  
Association  
initiative.

Organised by  
Timber Queensland,  
Hoo Hoo Club 218  
& TABMA QLD.



## STUDY COMPLETIONS



### CONGRATULATIONS!!

Kylie Mirtchin from TABMA QLD this month completed her twelve month *Certificate III in Office Administration* traineeship.



## DEBT COLLECTION

**Professional Collection Services (P.C.S)** has been established for 11 years; expanding operations to service the east coast of Australia with offices in Brisbane, Sunshine Coast, Sydney and Melbourne.

P.C.S can supply all members of TABMA to help with Bad Debts. With **no upfront fee service** for Debt collection (if they cannot collect there is no commission charged); TABMA has arranged a discounted flat rate of 12.5% + GST. This is a substantial saving with usual rates charged on a sliding scale starting at 25% + GST. This **offer is exclusive** to Members of TABMA and only available if a password is quoted to P.C.S upon request of service. Contact TABMA for this password.

Other benefits of using P.C.S. include:

- No joining fees.
- No lock in contracts.
- No cost to customers for letters of demand.
- Each client is allocated their own personal account manager who issues weekly or monthly reports on outstanding debts.
- If the debtor cannot be located or refuses to pay, P.C.S. conduct a free feasibility study on your behalf and advise you on legal action.
- Working from your instructions; any payment plans or submissions from the debtor are discussed before agreement is made.



### CONTACT DETAILS:

Rohan Posselt, Sales Manager

Ph: (07) 3831 5222, Mob: 0421 077 902

Fax: (07) 3831 5655

Email: [rposselt@profcoll.com.au](mailto:rposselt@profcoll.com.au)

Web: [www.profcoll.com.au](http://www.profcoll.com.au)

Offices in Brisbane, Sunshine Coast,  
Sydney & Melbourne.

## LEGAL SERVICES



### CONTACT DETAILS:

Stewart Wilkinson

Business Development Manager

Ph: 0400 014 215

Email:

[stewart.wilkinson@msblawyers.com.au](mailto:stewart.wilkinson@msblawyers.com.au)

Offices in Brisbane, Sunshine Coast,  
Sydney & Melbourne.

All of TABMA members who use the services of MSB Lawyers will receive free consultation, advice and reduced fees.

MSB Lawyers is a boutique law firm specialising in:

- Debt recovery
- Insolvency litigation both personal and corporate
- Commercial law
- Contracts
- Building disputes
- Wills and estates

# MSB

# CONSTRUCTION & ECONOMIC FORECAST



## INFORMATION BREAKFAST

Presenting short and long term forecasts of construction and economic activity, our guest speaker will share:

- The economic outlook including macro factors.
- Recent trends in activity & industry employment.
- Affect of population trends & interest rates.
- Demand forecasts for residential, non-residential and engineering projects.

**DATE:** Wednesday 4th February, 2009

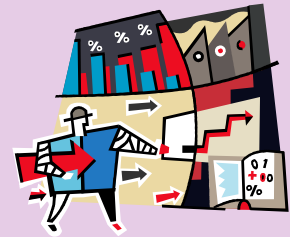
**TIME:** 7.30am Hot Breakfast Served  
8.00am Presentation Begins

**VENUE:** 433 on Logan Conference Centre  
433 Logan Road  
Stones Corner Qld 4120

**COST:** Members: \$45 PP (inc. GST)  
Non-members: \$55 PP (inc. GST)

**RSVP:** 30th January, 2009

A limit of 65 seats available.  
Parking information attached.



**GUEST PRESENTER:**  
**Mr Peter Barda**  
**Construction Forecasting Council**

Peter Barda is the Executive Director of the Australian Construction Industry Forum (ACIF), the peak consultative forum for the building and construction industry in Australia. ACIF's members are the national organisations representing investors, designers, planners, constructors, developers and facility managers. Peter was formerly CEO of the Property Council of Australia, and of the Commonwealth Government's Construction Industry Development Agency. He is also involved in development of major infrastructure projects, including the Surat Basin Rail project in Queensland.

Please complete the form below & return by fax (07) 3847 4632, email [karen@tabma.com.au](mailto:karen@tabma.com.au) or phone our office on (07) 3847 4637

Contact

Company

Email

Name

Address

Name

Phone

Name

TABMA would like to invite you to participate in our

# WINNERS CIRCLE BUS TOUR

Spend a day touring the premises of 5 category winners from the **2008 Queensland Timber Industry Awards.**

What a great opportunity to network with industry peers, meet and greet the people behind the scenes and witness first hand the business operations of those who excel within the industry.

Morning tea and lunch provided.



**FREE**  
for  
**TABMA**  
Members!

+\$20 Non-Members

ITINERARY:	
7.30am	Meet at Garden City Mt Gravatt
8.00am	Bus Departs
9.00am-9.30am	Simmonds Lumber
10.00am-10.30am	Tradeware Building Supplies
10.30am-10.50am	<b>MORNING TEA</b>
11.30am-12.30pm	Langs Frame & Truss (Yatala) Langs Building Centre (Yatala)
12.30pm-1.30pm	<b>LUNCH</b>
2.00pm-2.30pm	Corbek Timber Preservation
3.30pm	Arrive back Mt Gravatt



Proudly Sponsored by:



For more information call (07) 3847 4637

Limit of 30 seats available! GET IN QUICK!

**FAX BACK to (07) 3847 4632 by Friday 28 November 2008**

Name/s: .....

Company: .....

Ph: ..... Fax: .....

Email: .....

# Queensland Timber Industry Bus Tour

Accompany industry personnel on a three day tour of South East Queensland timber industry operations.

Open to all industry sectors; forestry, sawmilling, manufacturing, wholesalers, merchants, specifiers, engineers and architects, this tour is a fantastic educational and networking opportunity.

Organisers and hosts for the tour include Colin MacKenzie (Timber Queensland), Norm Forbes (ex-Hyne), John Muller (ex-Tasbeam), Don Towerton (Thora Wholesale Timbers & Hoo Hoo Club 218), Jim Bowden (Timber & Forest E-News) & Karen Johnston (TABMA QLD).

**WHEN:** March 2009:- Monday 23, Tuesday 24 & Wednesday 25

**COST:** \$550 per person (incl GST)  
Includes twin accommodation\*, all meals, bus hire, protective equipment.  
*\*Single room surcharge of \$100 applies*

**PAYMENT:** Cheques, Credit Card & Direct Deposit  
Made payable to TABMA QLD  
PO BOX 107, Surry Hills NSW 2010  
Bank: ANZ Haymarket,  
A/c Name: TABMA QLD  
BSB: 012-204  
A/c: 1087-53282

Confirmation of registration is subject to full payment.  
Credit Card payments attract 2% additional charge.

## INCLUDES\* GUIDED TOURS OF:

- ✧ Hoop Pine Green & Dry Mill  
Hyne Imbil & Melawondi
- ✧ Hardwood, Green & Dry Mill  
Robertson Bros. Gympie
- ✧ MDF Manufacturing  
Laminex
- ✧ Logging/Nursery Operations  
Tuan/Toolara Plantations
- ✧ Softwood Green & Dry Mill,  
Grading, Finger Jointing, MGP.  
Hyne Tuan
- ✧ Hardwood Green & Dry Mill  
Dale & Meyers Maryborough
- ✧ Laminated Beams  
Hyne Glulam
- ✧ Preservative Treatment  
Dale & Meyers Tiaro
- ✧ LVL, I-Beam & Mouldings Plant  
Hyne Virginia
- ✧ Recycled Timber Processing  
Kennedy's Classic Aged Timbers

Numbers are Limited

\* Subject to confirmation/change

**Closing date for reservations is 11 February 2009.** Complete the form below and return by fax, (07) 3847 4632 or email, [karen@tabma.com.au](mailto:karen@tabma.com.au). For more information call Karen Johnston on (07) 3847 4637

.....  
Attendee

.....  
Attendee

.....  
Company

.....  
Phone

.....  
Email

.....  
Address

.....  
Fax

A Joint Queensland Timber Industry  
Association Venture  
Timber Queensland :: Hoo Hoo Club  
218 :: TABMA Queensland

